

Table of Contents



vi Table of Contents

xiii Foreword

xiv Preface

2 Examining the Nikon D3000

5 Digital Sensor Basics, or Why Does
a DSLR Make Better Images?

6 Section 1 –

Initial Camera Configuration

6 External Camera Controls

8 First Use of the Nikon D3000

14 Initial Camera Setup

17 Formatting the Memory Card

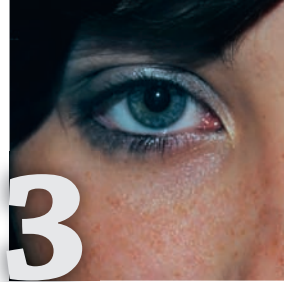
20 I Want to Take Some Pictures Now!

22 Section 2 –

Adjusting the Nikon D3000's
Settings

22 The Difference Between
the Information Screen and
Information Edit Menu

27 My Conclusions



**28 Nikon Guide Menus –
Basic Use**

- 30 Shoot Guide Menu – Basic Use
- 32 Shoot Menu – Easy Operation
- 36 Shoot Menu – Advanced Operation
- 41 My Conclusions

42 Guide Menu – Advanced Use

- 44 Shoot Menu Screen Review
- 48 Shoot Menu’s More Settings
Selection
- 56 Shoot Menu’s Timers &
Remote Control
- 57 Guide Menu’s View/Delete
Selections
- 65 Guide Menu’s Set up Selections
- 89 My Conclusions



90 Playback Menu

- 91 Delete Function
- 96 Playback Folder
- 97 Display Mode
- 102 Image Review
- 103 Rotate Tall
- 104 Slide Show
- 107 Printing Pictures without a Computer
- 109 Section 1 – PictBridge Printing
- 124 Section 2 – Print Set (DPOF)
- 127 Stop-Motion Movie
- 127 My Conclusions



128 Shooting and Information Edit Menus

- 130 Using the Shooting Menu
- 131 Using the Information Edit Menu
- 132 Reset Shooting Options
- 133 Set Picture Control
- 136 Image quality
- 144 Image size
- 146 White balance
- 148 ISO sensitivity settings
- 156 Active D-Lighting
- 158 Color Spaces
- 160 Noise reduction
- 162 Release mode
- 164 Focus modes
- 166 AF-Area Modes
- 168 AF-Assist
- 169 Metering
- 171 Built-in flash
- 172 Flash Compensation
- 174 Exposure Compensation
- 175 Flash Modes
- 177 My Conclusions



178 Setup Menu

- 179 Reset Setup Options
- 180 Format Memory Card
- 180 LCD Brightness
- 182 Info Display Format
- 184 Auto Info Display
- 186 Clean Image Sensor
- 187 Mirror Lock-Up
- 189 Video Mode
- 190 Time Zone and Date
- 193 Language
- 194 Image Comment
- 195 Auto Image Rotation
- 196 Dust Off Ref Photo
- 199 Auto Off Timers
- 201 Self-Timer Delay
- 202 Remote on Duration
- 204 Beep
- 204 Viewfinder Options
- 207 File Number Sequence
- 209 Buttons
- 214 No Memory Card?
- 215 Date Imprint
- 218 Active Folder
- 222 Firmware Version
- 223 My Conclusions



224 Retouch and Recent Settings Menus

- 225 Section 1 – Retouch Menu
- 226 D-Lighting
- 227 Red-Eye Correction
- 228 Trim
- 230 Monochrome
- 231 Filter Effects
- 238 Color Balance
- 240 Small Picture
- 241 Image Overlay
- 244 NEF (RAW) Processing
- 248 Quick Retouch
- 248 Color Outline
- 250 Miniature Effect
- 251 Stop-Motion Movie
- 255 Before and After
- 256 Section 2 – Recent Settings
- 257 My Conclusions



258 Aperture, Shutter Speed, and Focal Length

- 259 Understanding the Camera's Aperture
- 261 How Does the Aperture Work? – An Experiment
- 261 What Is an Aperture Number?
- 262 Using Older Lenses with an Aperture Ring
- 263 Using the Camera's Aperture
- 264 Understanding Depth of Field
- 267 Effect of Focal Length on Depth of Field
- 268 Understanding the Camera's Shutter Speed
- 271 Using the Aperture and Shutter Speed Together for Great Pictures
- 274 A Little More Exposure Detail
- 274 General Shutter Speed/Aperture Exposure Rule
- 275 Aperture and Shutter Speed Chart
- 277 Focal Length
- 278 Vibration Reduction (VR) Lenses
- 279 Focus Motor in the Lens
- 279 A Simple Warning
- 279 My Conclusions



280 Exposure Metering System, Exposure Modes, and Histogram

- 281 Section 1 – Exposure Metering Systems
- 282 3D Color Matrix II Metering
- 283 Center-Weighted Metering
- 284 Spot Metering
- 287 Section 2 – Exposure Modes
- 288 P – Programmed Auto Mode
- 290 S – Shutter-Priority Auto Mode
- 290 A – Aperture-Priority Auto Mode
- 291 M – Manual Mode
- 292 My Recommendations on Exposure Mode Selection
- 293 Full AUTO and Scene Modes
- 299 Why Have Scene Modes?
- 299 Section 3 – Histogram
- 300 Understanding the Histogram (An Overview)
- 309 My Conclusions



310 White Balance

- 311 How Does White Balance (WB) Work?
- 312 Color Temperature
- 314 Method 1 – Setting White Balance with the Information Edit Screens
- 317 Method 2 – Setting White Balance with the Shooting Menu
- 319 Mired WB Fine-Tuning Values
- 320 Measuring Ambient Light and Using PRE
- 322 Selecting the WB from a Previously Taken Image
- 323 Auto White Balance
- 324 Should I Worry about White Balance if I Shoot in RAW Mode?
- 325 My Conclusions



326 Multi-CAM 1000 Autofocus

- 327 What is the Multi-CAM 1000 Autofocus Module?
- 329 AF System Override with Lens Setting
- 329 Understanding the Focus, AF-Area, and Release Modes
- 330 Focus Modes in Detail
- 330 Auto-servo AF mode (AF-A)
- 332 Single-servo AF mode (AF-S)
- 333 Continuous-servo AF mode (AF-C)
- 334 Manual focus (MF)
- 336 AF-Area Modes in Detail
- 336 Single-Point AF-Area Mode
- 338 Dynamic-Area Autofocus
- 340 Auto-Area Autofocus
- 341 3D-Tracking (11 Points) Autofocus
- 343 Release Modes in Detail
- 343 Single Frame Mode
- 344 Continuous Mode
- 344 Three Additional Release Modes
- 345 My Conclusions



346 Speedlight Flash Photography

- 347 What is a Guide Number?
- 350 Using the D3000's Flash Settings
- 350 Shutter Curtain Information
- 351 Understanding the Flash Modes
- 356 What is the Nikon Creative Lighting System (CLS)?
- 357 How Does the D3000 Fit into the CLS Scheme?
- 358 Selecting a Nikon Speedlight Flash Unit
- 360 My Conclusions about Flash
- 361 Conclusion